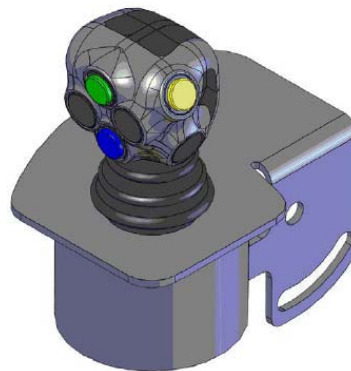


Proportional – Ventil



Ersatzteilliste zu ECO- Proportionalventilsteuerung 58.753

(Stand: 19.05.2010)

Hauptkomponenten: Elektronik

Principal-component:

Adapterkabel Adaptercable
für NIMCO-Ventile OC u.LS-LSP
5. Magnet (AMP auf Hirschmann Vierkantstecker)
Ident.Nr:3433550

Peripheral cable LC
Peripheriekabel LC
Ident.Nr:1431690

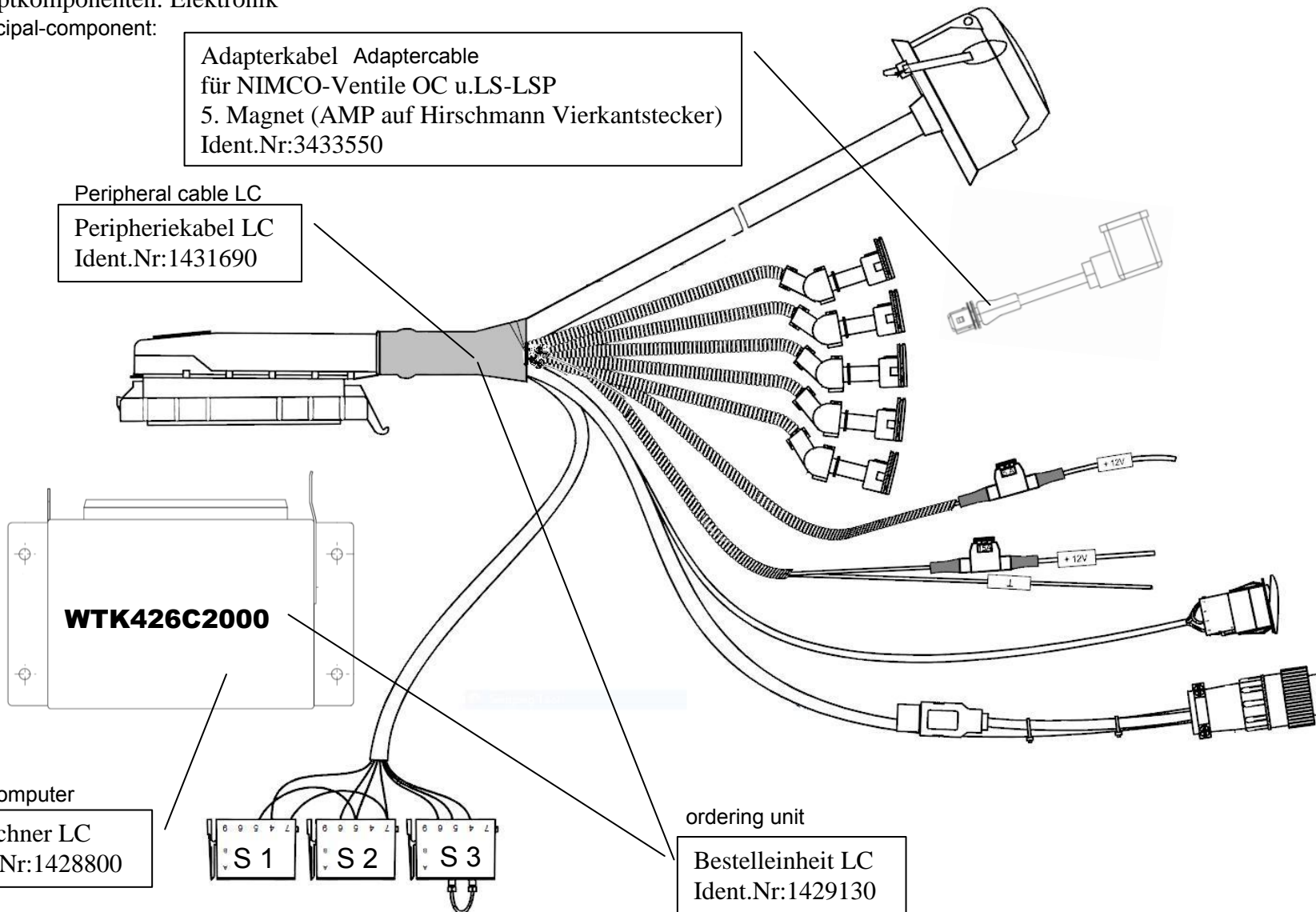
WTK426C2000

Job computer

Jobrechner LC
Ident.Nr:1428800

ordering unit

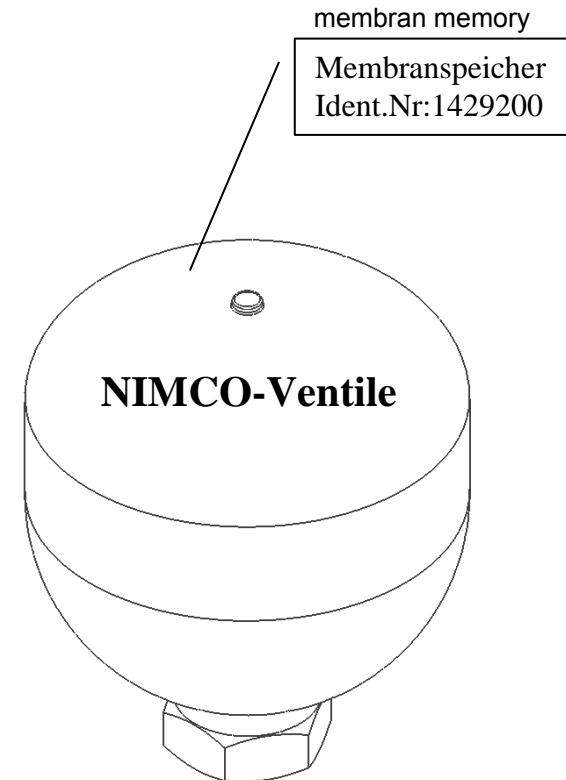
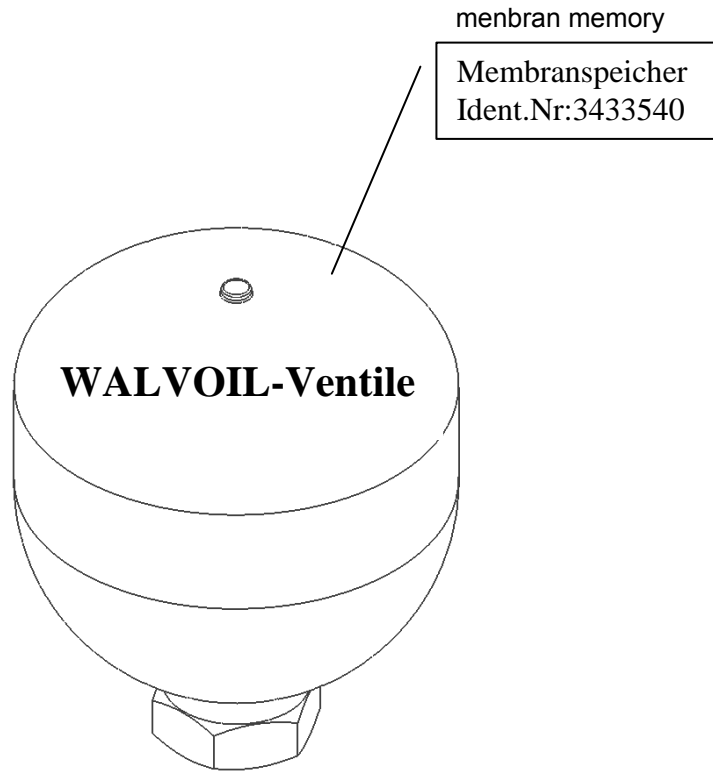
Bestelleinheit LC
Ident.Nr:1429130



Hauptkomponenten: Ventil
Principal-component

Siehe NIMCO- und WALVOIL- Unterlagen

see Nimco and Walvoil components



Einzelkomponenten: Joystick
Single components

Joystick APEM 1432400 neue Ausführung rundes Gehäuse ab ca. 08.2010

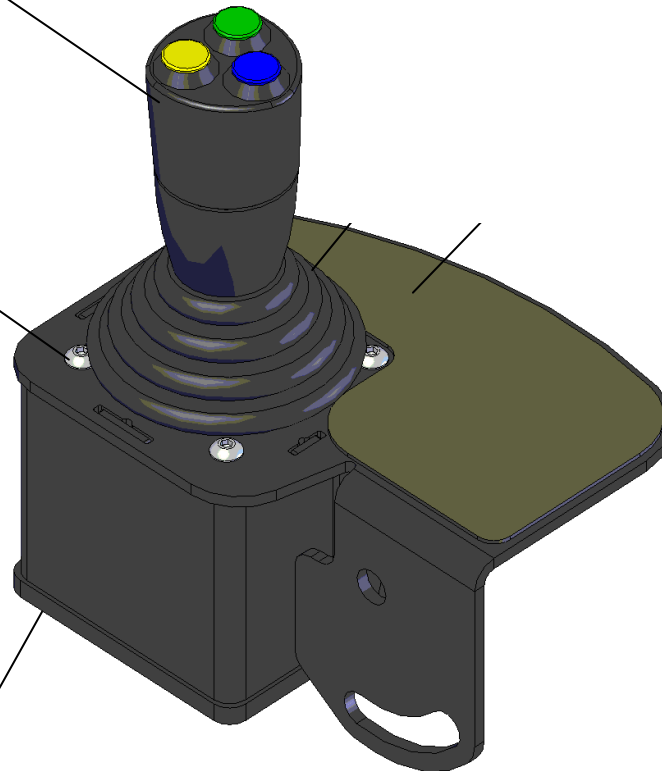
new modell round house

Joystick-Griff 3 Taster
Ident.Nr:1427660
Kabel müssen eigenständig
verlötet werden.

nur für Joystick alt 3433280

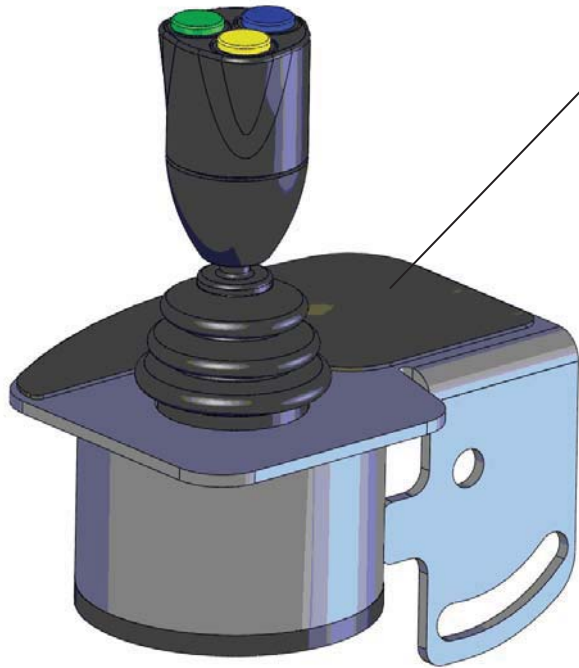
Flachkopfschraube
Ident.Nr:1428250

Vierkantstopfen
Ident.Nr:0453460



Einzelkomponenten: Joystick

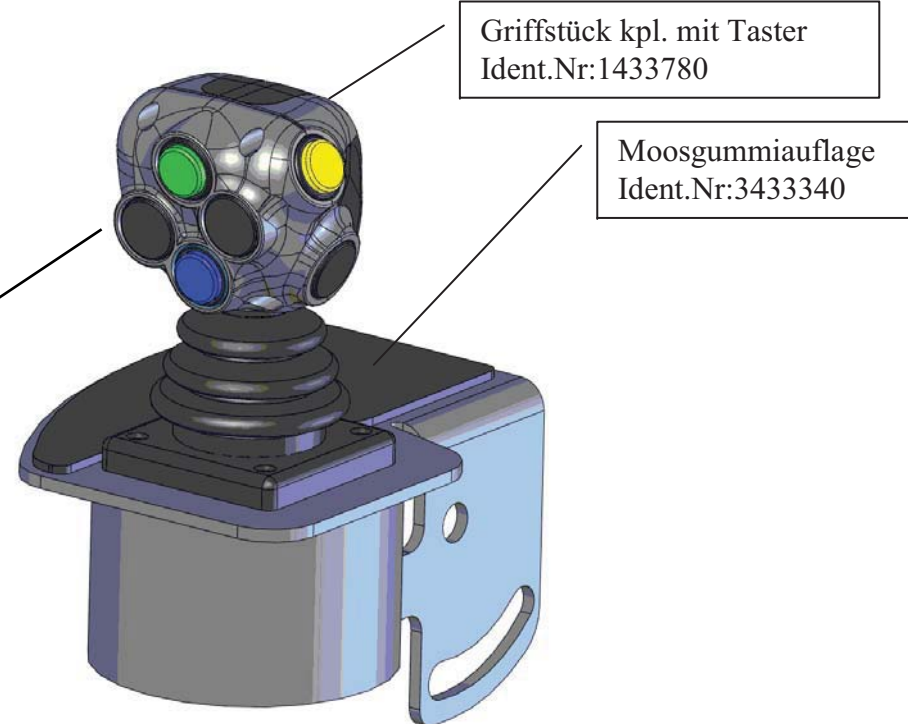
Joystick APEM alt
Ident.Nr:1432400



Moosgummiauflage
Ident.Nr:3433340

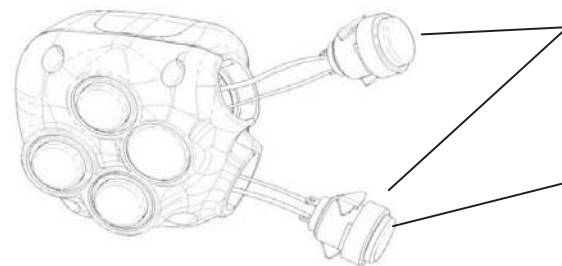
Joystick APEM NEW
Ident.Nr:1433450

Blindkappe
1434590



Griffstück kpl. mit Taster
Ident.Nr:1433780

Moosgummiauflage
Ident.Nr:3433340



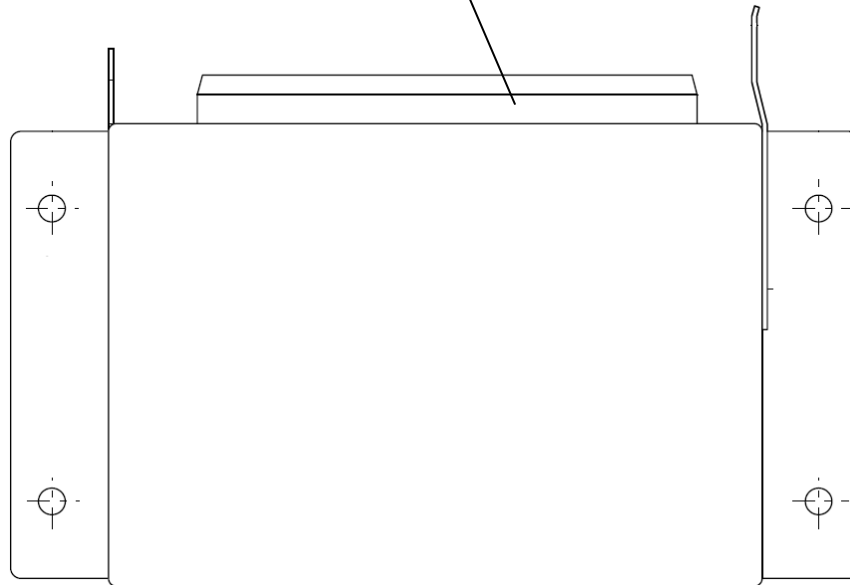
Nachrüstung Taster kpl.
Ident.Nr:3557120

Taster Rot kpl.
Ident.Nr:1434010

Einzelkomponenten: Jobrechner LC

Seal job computer

Dichtung für Jobrechner LC
Ident.Nr:1430880



Einzelkomponenten: Peripheriekabel LC
Single components peripheral cable

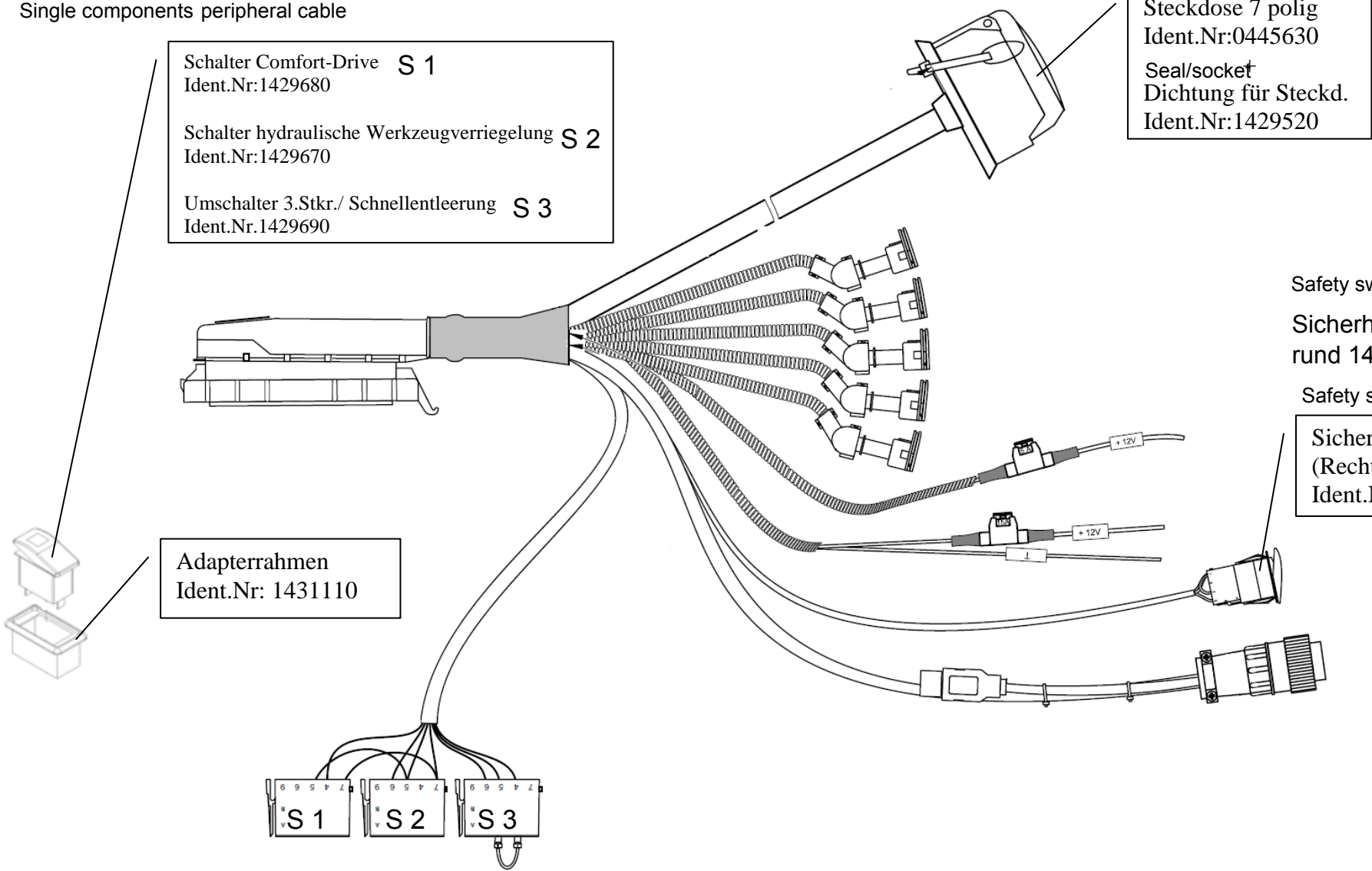
- Schalter Comfort-Drive S 1
Ident.Nr:1429680
- Schalter hydraulische Werkzeugverriegelung S 2
Ident.Nr:1429670
- Umschalter 3.Stkr./ Schnellentleerung S 3
Ident.Nr.1429690

Adapterrahmen
Ident.Nr: 1431110

Socket
Steckdose 7 polig
Ident.Nr:0445630
Seal/socket
Dichtung für Steckd.
Ident.Nr:1429520

Safety switches round
Sicherheitstaster
rund 1428820

Safety switches square
Sicherheitstaster
(Rechteckig)
Ident.Nr: 1431950

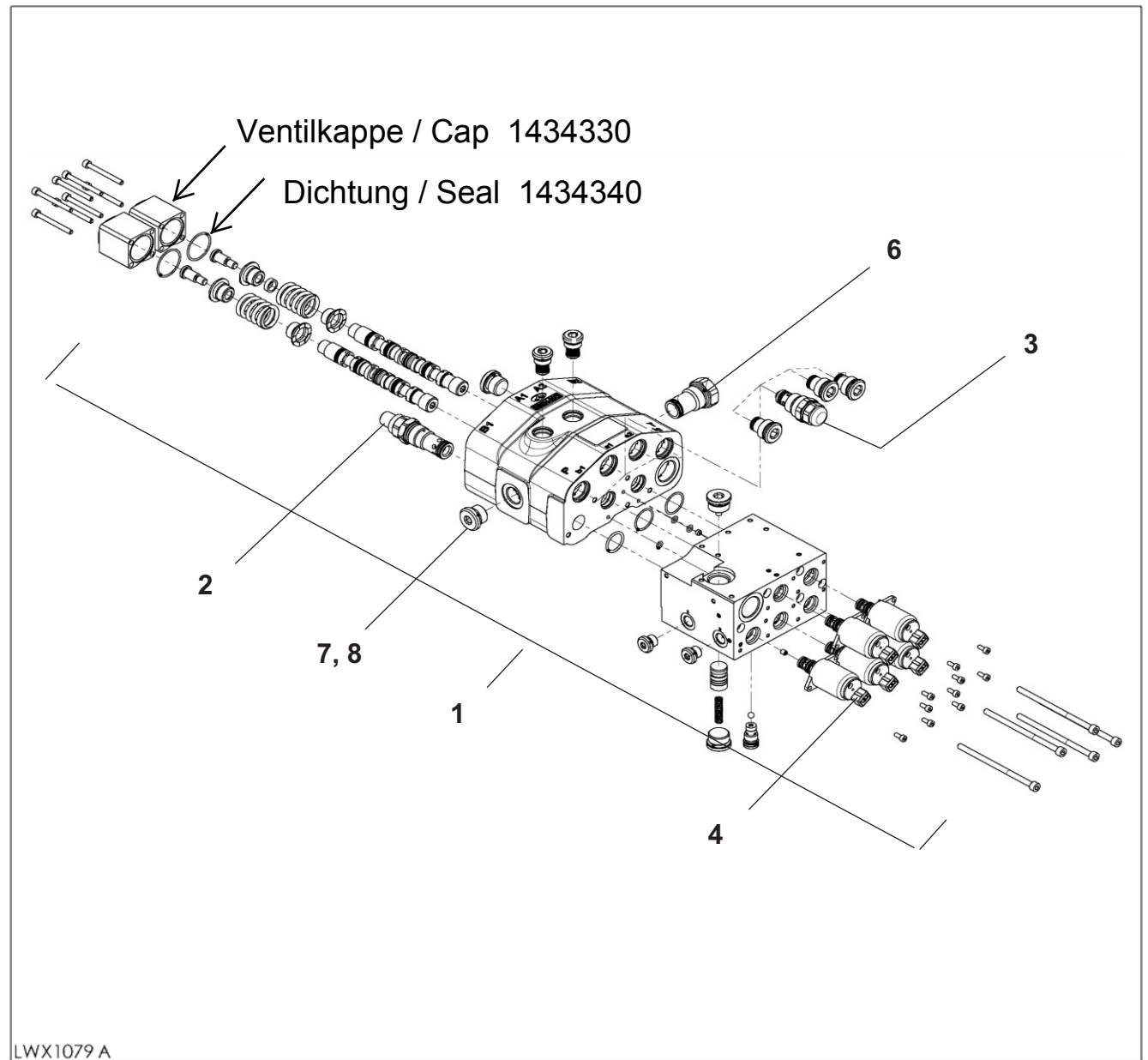


ProfiLine FS / FZ
8-80.1

DE Dichtsatz für proportional. Wegeventil OC Walvoil

EN Seal kit for proportional. valve OC Walvoil

FR Jeu de joints pour distributeur OC proportionnel

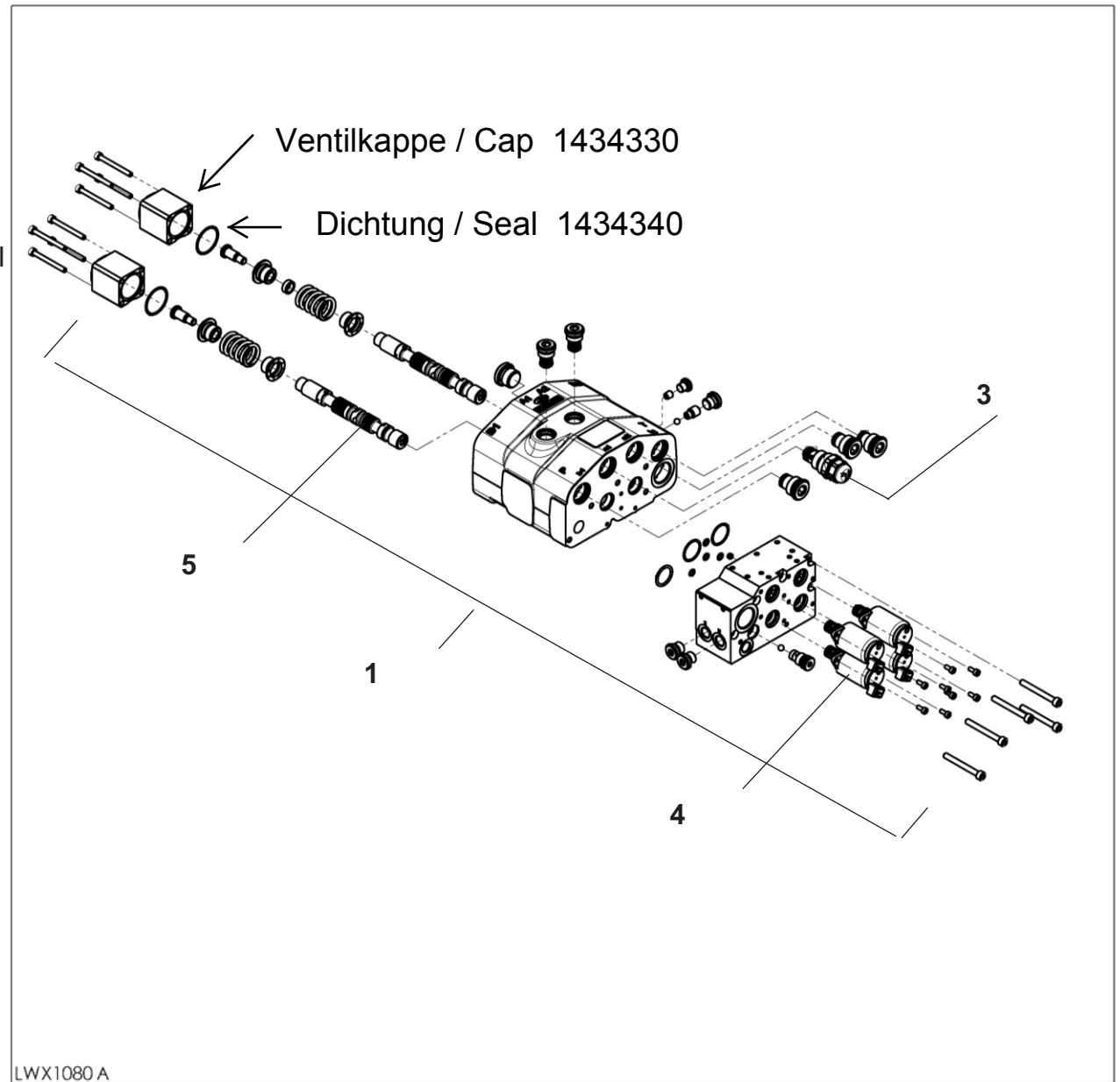


ProfiLine FS / FZ
8-80.1

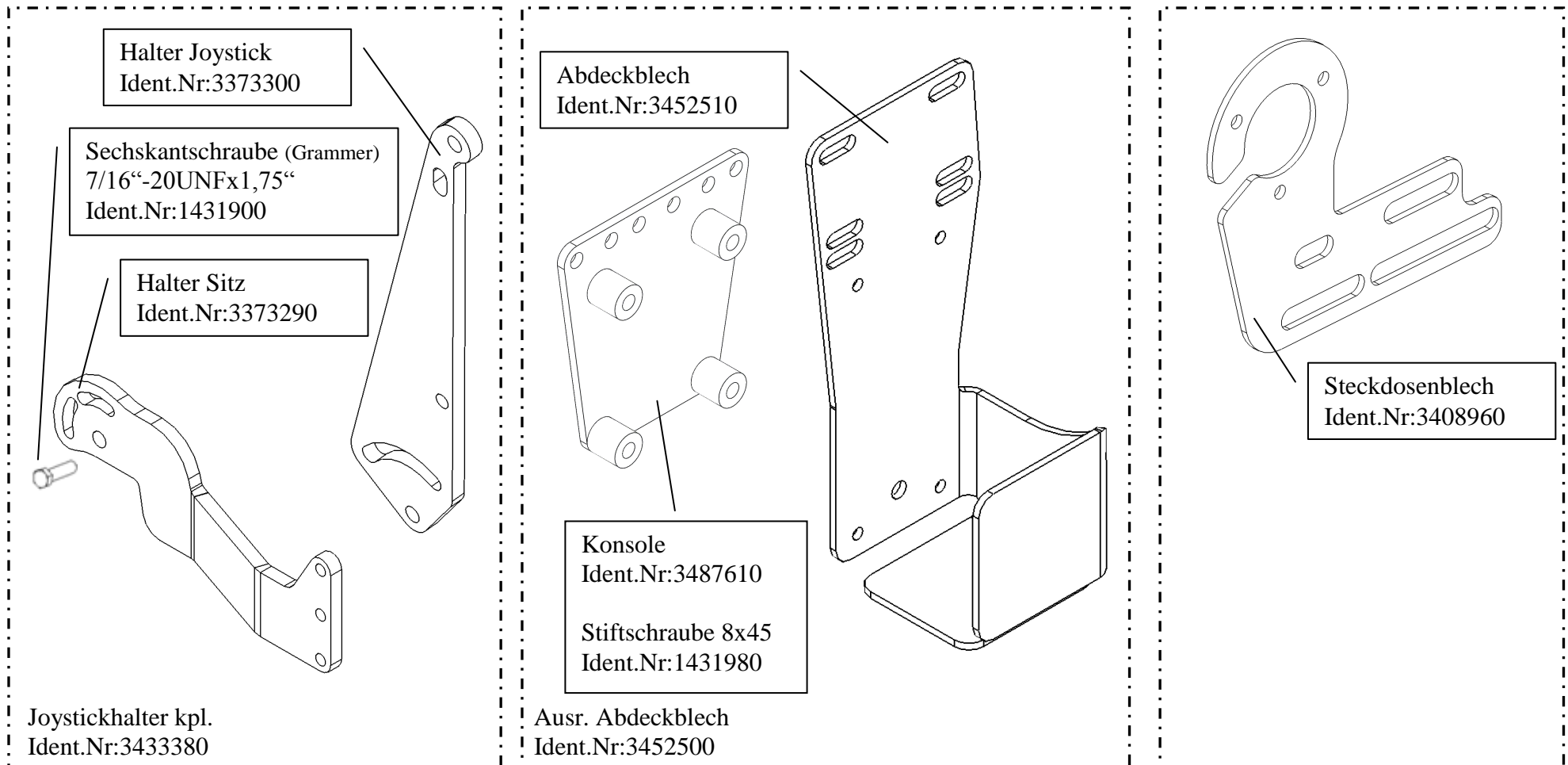
DE Dichtsatz für proportional. Wegeventil LS / LSP Walvoil

EN Seal kit for proportional. valve LS / LSP Walvoil

FR Jeu de joints pour distributeur LS / LSP proportionnel



Einzelkomponenten: Halter



Steckdose, 7-polig

Nach DIN ISO 1724. Mittelkontakt (58L) mit Kontaktstift. Belastbarkeit 20A bei 12V.

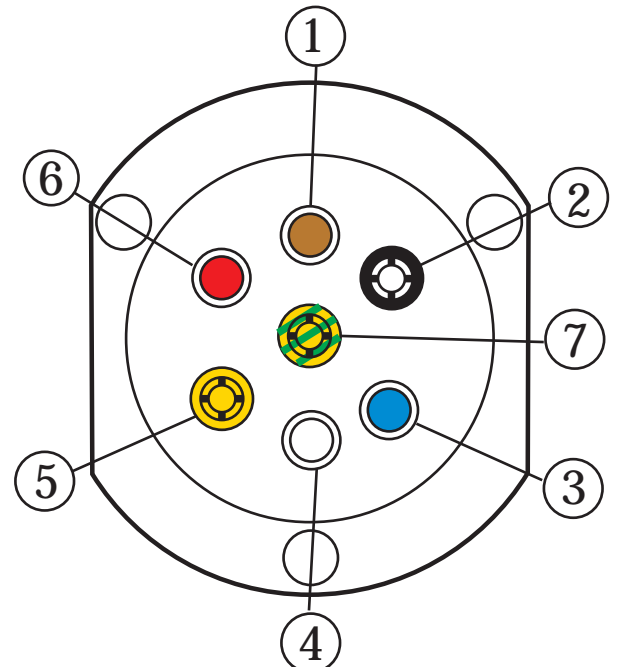
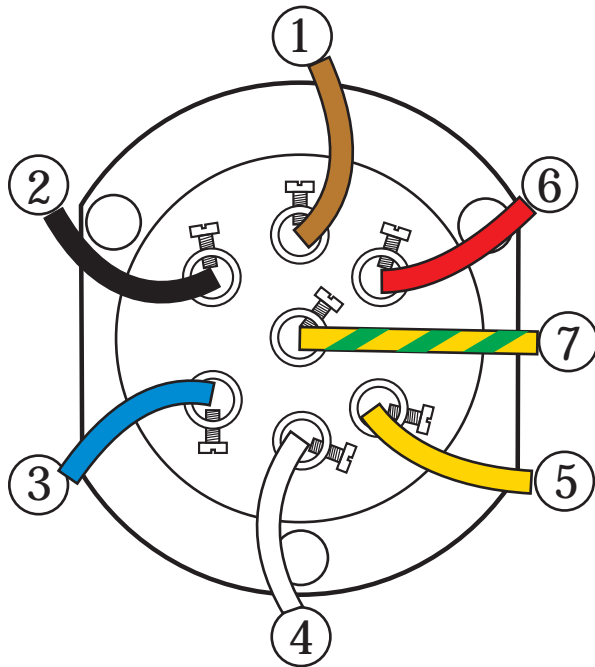
Socket, 7-pin. To DIN ISO 1724, middle contact (58L) with contact sleeve. Loading capacity max. 20A at 123V.





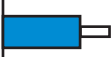

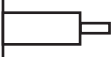
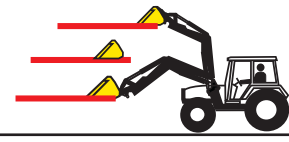



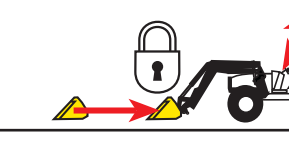


Stickdosa 7-polig. Enligt DIN ISO 1724. Mittkontakt (58L) medkontaktstift. Belastbarhet: 20A vid 12V.

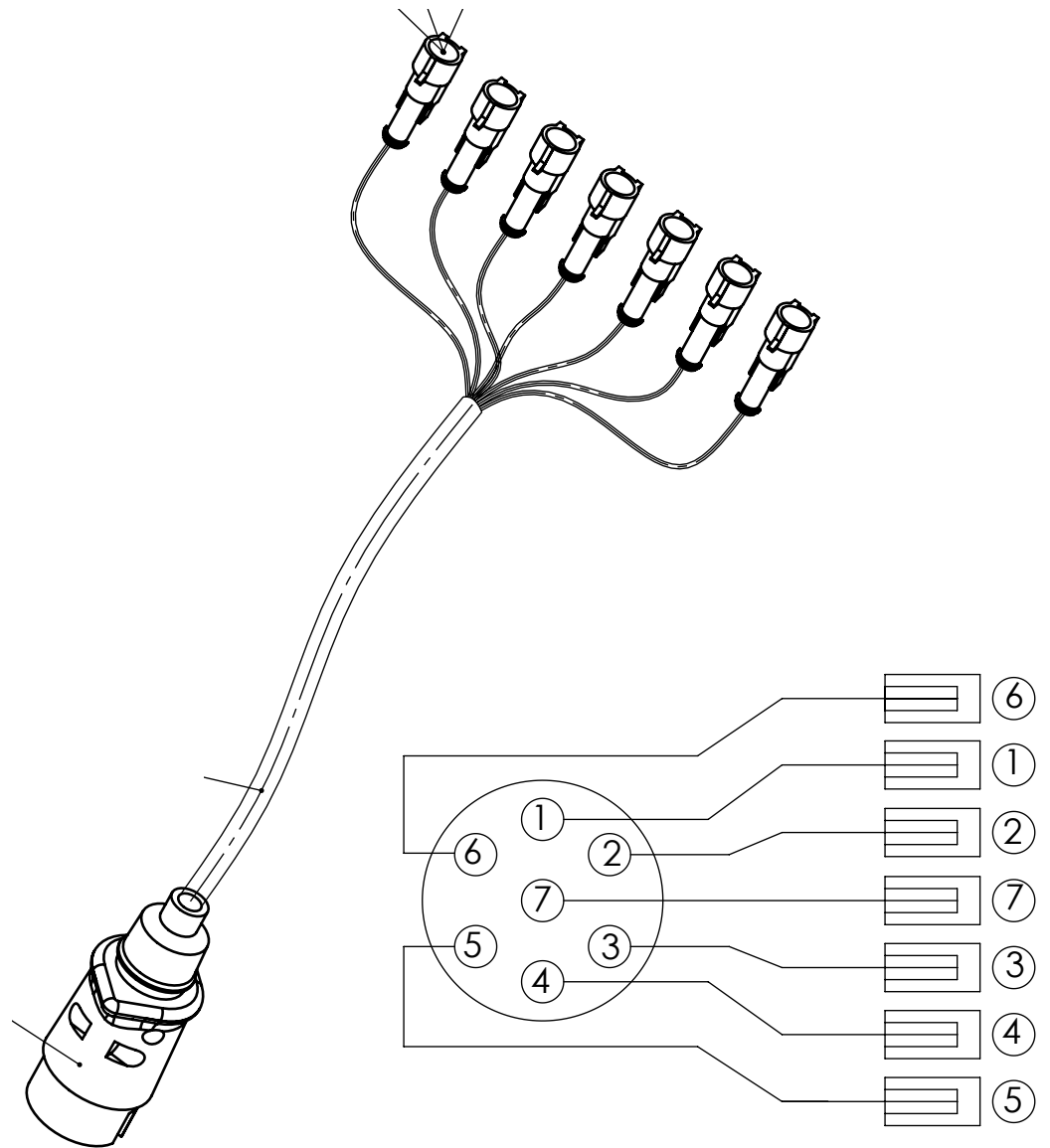
Prise 7 pôles. Selon DIN ISO 1724. Contact central (58L) avec plot de contact. charge max.: 20A sur 12V.

Caja de enchufe de 7 polos. Conforme a DIN ISO 1724. Conacto central (85L) con clavija de contacto. Carga máxima: 20A con 12V.

Presă a 7 poli. Secondo DIN ISO 1724. Contatto centrale (58L) con spina di contatto. Carico ammesso: 20A a 12V



①		4. Hydr. Steuerkreis	
②		3. Hydr. Steuerkreis	
③		Eilgang-Entleerung	
④		Parrallelführung	
⑤		Comfort-Drive	
⑥		Elektro-Hydr. Werkzeugverriegelung	
⑦		Niveau-Automatik	



- | | |
|--------------------|------------------------------|
| Ader 1 (braun) | - 4. Steuerkreis |
| Ader 2 (schwarz) | - 3. Steuerkreis |
| Ader 3 (blau) | - Eilgang |
| Ader 4 (weiß) | - Parallelführung |
| Ader 5 (gelb) | - Comfort Drive |
| Ader 6 (rot) | - hydr. Werkzeugverriegelung |
| Ader 7 (grün-gelb) | - Niveau Automatik |